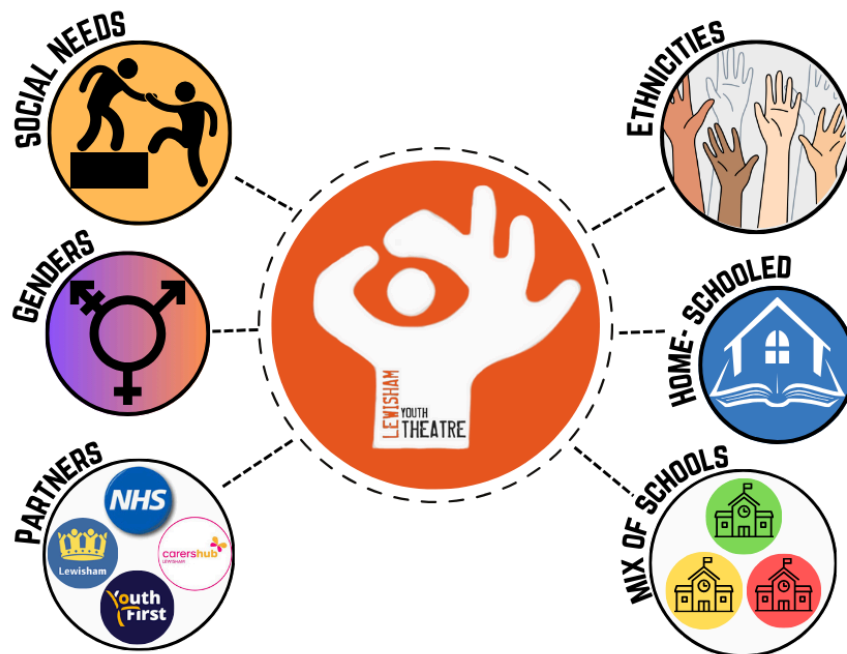




# LEWISHAM YOUTH THEATRE

## Allocation at Lewisham Youth Theatre



**At LYT each programme consists of up to 20 Members.**

To make sure that our services remain as inclusive as possible, our programme recruitment strategy aims to ensure that there is a mix of young people that represent Lewisham's diverse communities.

**Each group should be a mix of:**

- Genders
- Ethnicities
- New & returning members
- School, college and home educated young people
- Various levels of experience
- Those who identify as 'in need' and need extra support to take part
- Those who will increase the diversity of LYT

We also consider the goals and targets of our funders as well as the needs of our partner organisations from across the borough.